

*We try to fly beyond our limits*



## Pollyplatt Community Primary School

### Newsletter 3 term 1

[www.pollyplatt.lincs.sch.uk](http://www.pollyplatt.lincs.sch.uk)

[enquiries@pollyplatt.lincs.sch.uk](mailto:enquiries@pollyplatt.lincs.sch.uk)

Twitter @pollyplatt

**Clubs:** A club letter has been sent home tonight for Y1 to Y6's. Reception children will have an opportunity to sign up to clubs after Christmas. Please make sure your child wants to attend a specific club before signing them up for it.

**Text Service:** A test text was sent out yesterday to all the contacts in our address book. If you did not receive a text please come to the office so we can check our system. Thank you.

**Special School Meal – 6<sup>th</sup> October:** The cut off time for ordering the Special Meal is midnight this Sunday. As a reminder, all meals must be ordered online via the Cygnet Catering website [www.cygnetnelmealselector.co.uk](http://www.cygnetnelmealselector.co.uk).

**Parking:** Please leave space when parking up to the fence in the car park to allow children to walk safely around the edge. Thank you.

**Contact Forms:** If you have not done so already, please could you complete the yellow contact forms and return to the office as soon as possible. If you have misplaced the form, please come to the office for a replacement. Thank you.

**Congratulations and well done to this weeks achievers!**

	Celebration Award	Values Award
Hawk	Evalyn – for setting an excellent example and always being kind and friendly	
Vulcan		Evie - Considerate
Canberra	Benjamin – for presenting work beautifully	Molly – Creative
Lancaster	Eden – for excellent enthusiastic work in maths	Jasmine – Considerate
Hinds	Samuel – setting a super example and always working hard	Freya – Collaborative
Wolsley	Alexi – for her fantastic attitude and effort she has put into everything this week	Isabel - Considerate

### Lancaster Visit Scampton Heritage Museum – Wednesday 28<sup>th</sup> September

The children will be walking over to the Heritage Museum to investigate what was happening at RAF Scampton in the 1930's and 1940's. Please ensure they have a coat.

**Pollyplatt Pets:** We have welcomed four fish to the tank in the office, and have now taken delivery of two Guinea Pigs that will take up residence inside the main entrance door. The children have been asked to come up with names for them.





# Parent-2-Parent

LPCF warmly welcomes parents and professionals to a talk on **Self Harm Awareness**

presented by Nicola Wickstead, a qualified counsellor and psychotherapist with CASY counselling.

This event is supported by Comic Relief funding and Managed Care Network.

**Who should attend?** This talk is suitable for parents, carers, professionals and anyone with an interest in self-harm.

### Content:

The workshop covers six main areas including:

- What is self harm?
- How do people self harm?
- Why do people do it?
- Indications and signs to look for
- How to help
- Appropriate support/next steps

### Aims:

The workshop aims to help you:

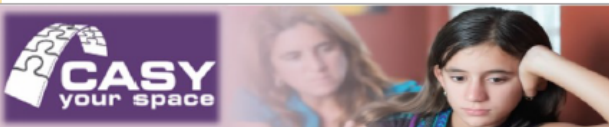
- Increase understanding of self harm
- Identify signs that someone may be self harming
- Make that first conversation with someone who may be self harming
- Know where to go for more help



To book your place at this event, drop us an email to let us know you are coming. Professionals can book through our website: [www.lincspcf.org.uk](http://www.lincspcf.org.uk).

Parent carers - FREE

Professionals - £25. Continuing Professional Development certificates can be booked in advance.



**30th September 2016**

**6:45pm for a 7pm start**

**Includes nibbles & refreshment break**

**Finishes at 9pm**

Waddington Village Hall,  
Off Mere Road,  
Waddington, LN5 9NX

[www.lincspcf.org.uk](http://www.lincspcf.org.uk) ~ email: [admin@lincspcf.org.uk](mailto:admin@lincspcf.org.uk)  
tel: 0845 33 11 310 (leave a message and we will get back to you)

Registered Charity No: 1141060

